

User Guide on Targa OfficeStation Management Console

1. Introduction

Thank you for buying the Targa OfficeStation terminal(s). This User's guide tells you how to use and configure the OfficeStation terminal(s) remotely. This program manual follows the basic procedures that you use to setup and use the administrator console and improve the security of your shared Host PC environment.

2. Information on the New Management Features




- Remotely configure the OfficeStation Connection Setting

This Manual provides instructions on managing OfficeStation(s) connection function. Its is recommended to read this manual carefully before using this new feature.

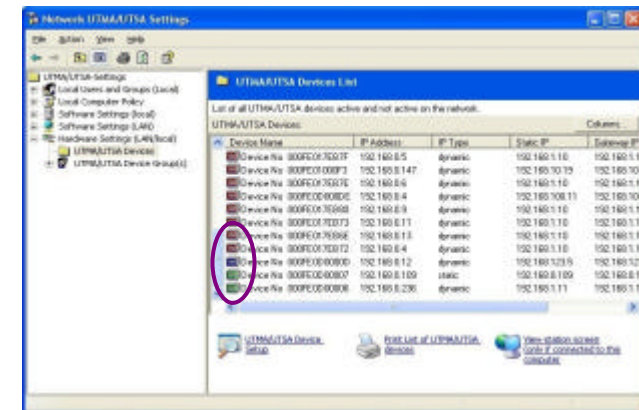
Hardware settings(LAN/Local) menu.

Settings on OfficeStation connected to the network can be changed from the administration console.(“UTMA/UTSA Device” displays information of the OfficeStation connected to your Network.) Select the OfficeStation whose settings are to be changed and click “UTMA/UTSA Device Setup” to change its setting. (“UTMA/UTSA Device Group(s)” can manage several OfficeStations into a group basis.)

Step 1) Click Hardware setting(LAN/Local) Menu in the NCT-2000-XP Console

-  OfficeStation Connected to the Host PC. (Green Color Icon)
-  OfficeStation Disconnected from the Host PC. (Blue Color Icon)
-  OfficeStation is Turn-Off or Connected with Host PC more then one time. (Red Color Icon)

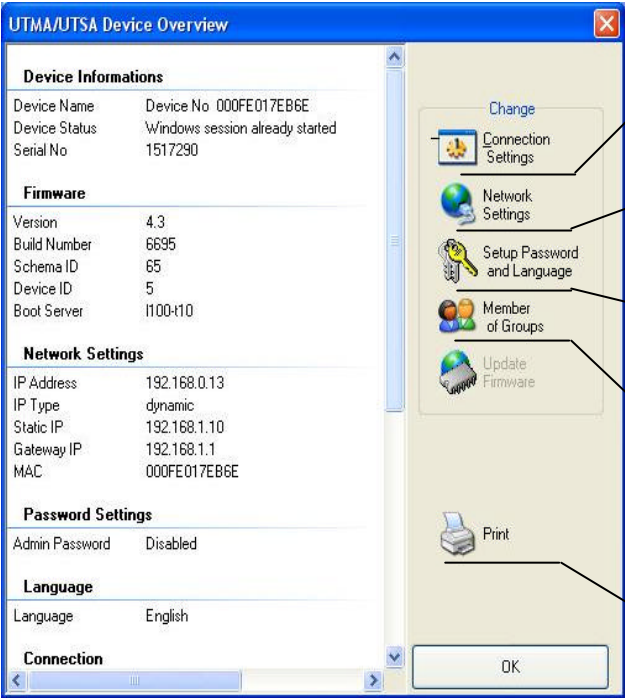
Step 2) Choose the “UTMA/UTSA device” to manage, and double click OfficeStation Device setup Icon.





Date : 2005-07-12

Step 3) "UTMA/UTSA Device Overview" display the connection setting on the selected OfficeStaion



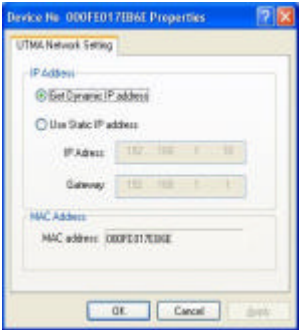
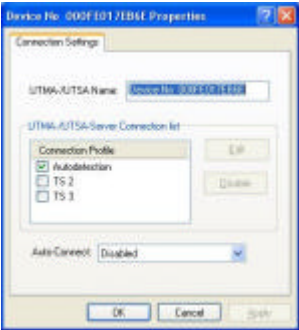
Connections Setting : OfficeStaion setup (Same item as TS option setup) for changing the Connection settings of the OfficeStation. (Auto Connection feature can be set through this utility)

Network Setting : UTMA/UTSA setup (Same item as Network option) for changing the OfficeStation's Network Setting.

Setup Password and Language : OfficeStaion setup (Same item as Password and Language option) for changing the setting values on password and language for the OfficeStaion.

Member of Groups : Shows logical groups currently available . Groups to Logocal Groups of OfficeStation can be created, assigned and deleted.

Print : Used to print out the content of the setup window shown on the screen.



- Note -

OfficeStaion settings (Connections Setting, Network Setting, Setup Password and Language) changed in the "UTMA/UTSA Device Setup" menu will be in effective after OfficeStaion is rebooted.



Date : 2005-07-12

- **Auto Connection Feature**

With the Auto Connection feature, you can bypass the OfficeStation BIOS screen and auto connect to Windows.

Introducing the Auto connect feature

- 1) Turn -On Your OfficeStation NetStar / Network Monitor
- 2) OfficeStation Terminal Startup Screen Appears



- 3) OfficeStation Terminal will go straightly into the Windows Logon Dialog box automatically.



- 4) Fill in the User name and Password



Date : 2005-07-12

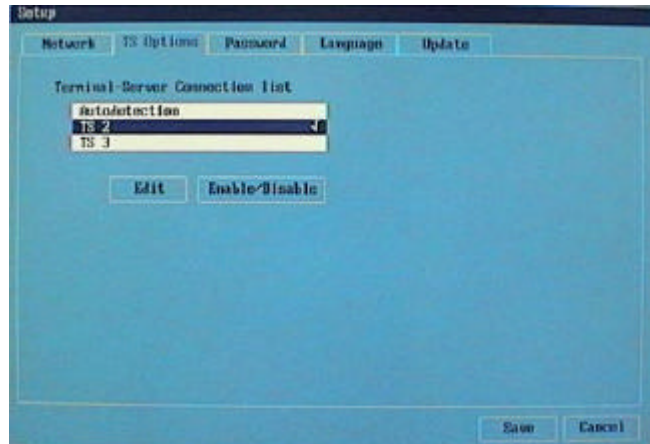
Note

How to Configure the Auto-connect Feature

Step 1) Click "Setup" to setup your Auto-Connect feature

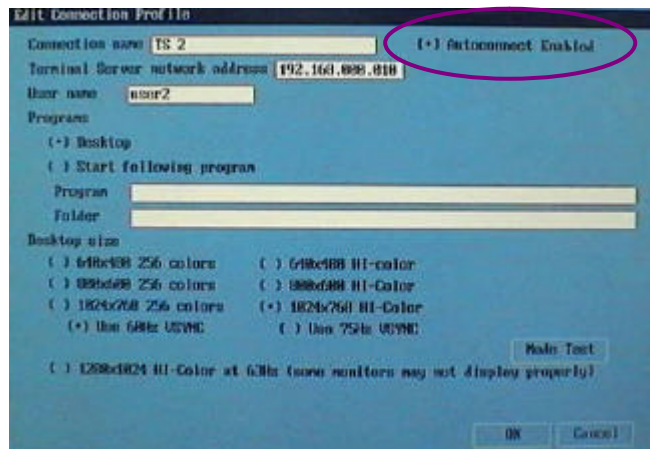
Step 2) Click "TS Options"

Step 3) Select "TS-2" then click "Enable/Disable"



Note) You must Disable the Autodetection selection.

Step 4) Click "Edit" to select the Option menu





Date : 2005-07-12

Step 5) Click “Autoconnect Enabled”

Step 6) Click “OK” to save all settings.

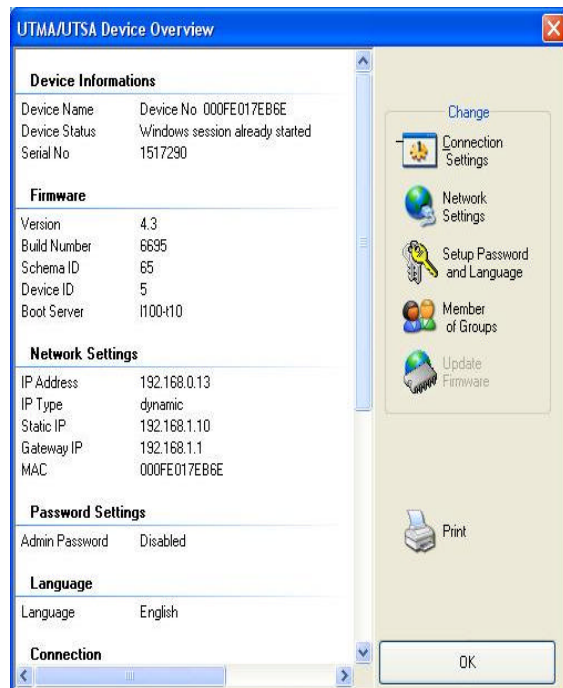
Host PC's NCT-2000-XP Console Setting

Step 1) Click “Hardware settings(LAN/Local)” menu from NCT-200-XP Console

Step 2) Click “UTMA/UTSA device” setup menu

Step 3) Select the OfficeStation device for configure by double click

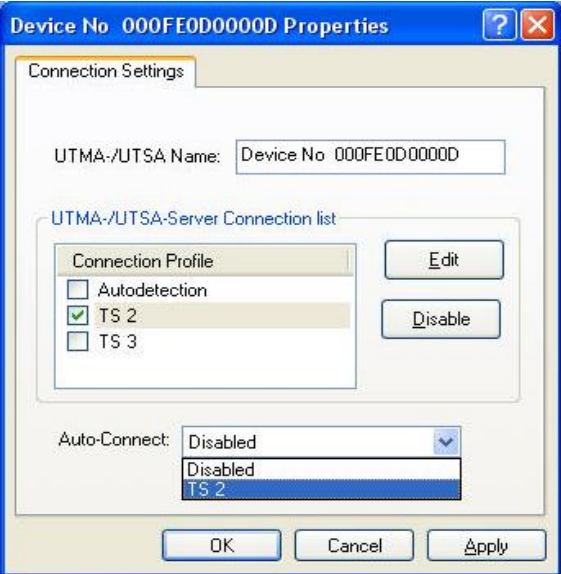
Step 4) Click “Connection Setting” to change the connection settings





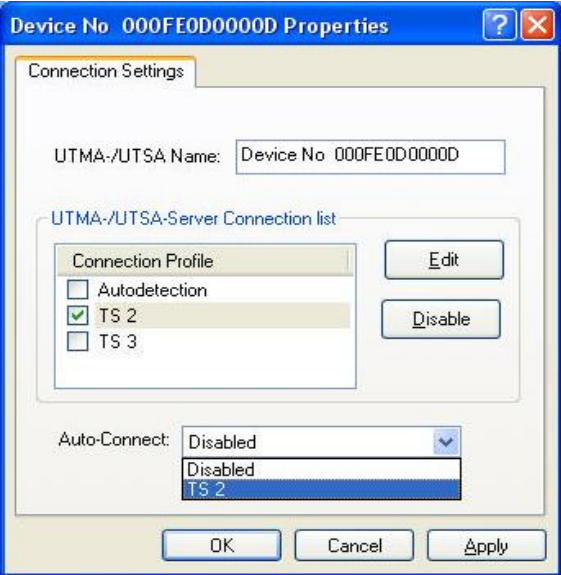
Date : 2005-07-12

Step 5) Click “TS 2” Connection Profile.



Note) You must Disable the Autodetection selection.

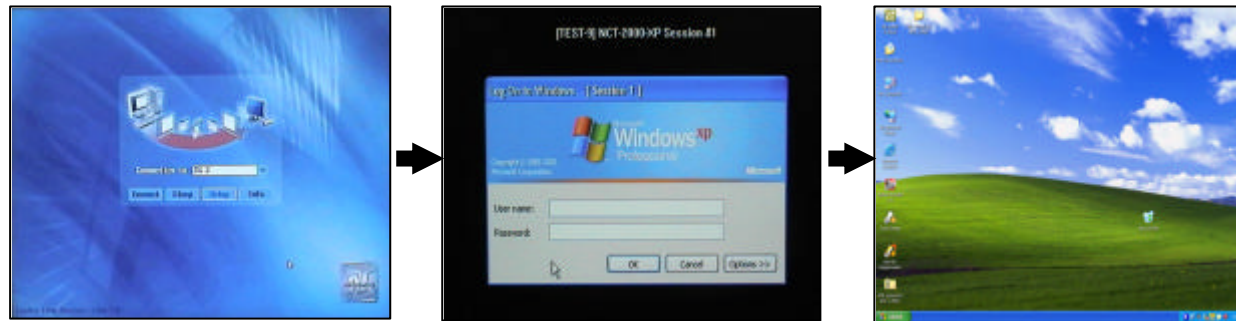
Step 6) Click “OK” to save all settings.



Date : 2005-07-12

- Auto Logon Function

With the Auto Logon function, you can bypass the Windows Logon Dialog box by the pre-defined user logon information.



Reference) Automatically logon to the Windows without entering logon information at the Windows Logon Dialog box.

Introducing the Auto Logon setup

Configure the Auto-Logon feature

Step 1) Click “Hardware settings(LAN/Local)” menu from NCT-200-XP Console

Step 2) Click “UTMA/UTSA device” setup menu

Step 3) Select the OfficeStation device for configure by double click

Step 4) Click “Connection Setting” to connection settings

Step 5) Select Connection Profile(Autodetection, TS 2, TS 3)

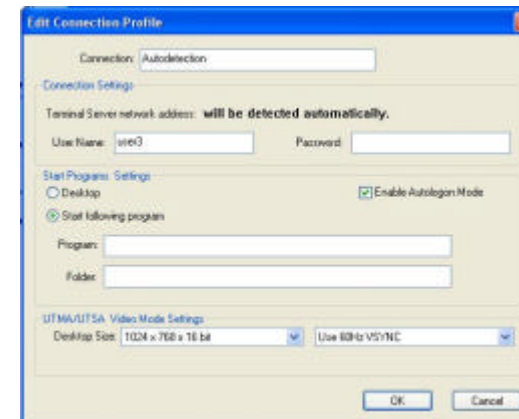
Step 6) Click “Edit” from Connection Profile

Step 7) Click “Enable Autologon Mode”

Step 8) Fill in the User name and Password information

Step 9) Click “OK” to save all settings.

Step 10) Click “OK” button from “Connection Settings”



- Note -

You can use Auto Logon and Auto Connection features together.

